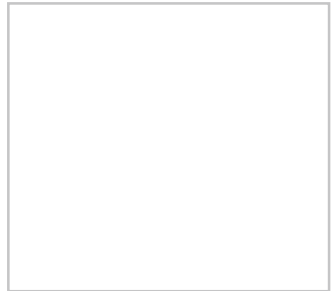
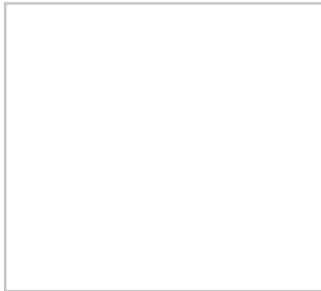
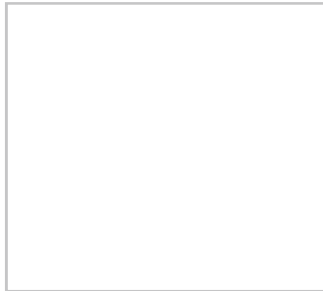
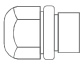








SERIES B 1141
HNA-socket, DIN 89262



Protection class to EN 60 529:	IP 56
Voltage:	250 V AC
Current intensity:	10 A
Material:	Brass
Terminal/poles:	10A / 250V. Protective earthing
Socket interior:	DIN 89320, version 2, up to 250V
Cable entries:	Cable glands M 24 x 1.5 (for cable outside diameter 10~13mm)

Type		Description	 kg
B 1141/L		Standard HNA sockets made of brass. Protective earthing. 10A / 250V. Screw cap made of plastic / ABS. Cable glands M 24 x 1.5. To be used together with N1142 M	1.5
B 1141/R			1.5
B 1141/2			1.7
B 1141/DL			1.7
B 1141/DR			1.7

Accessories / Spare parts

Description	Suitable for
Socket interior, PE, 10A/250V, DIN 89320	Noack B 1141 and 1144 series